

# ARTHOUSE RESIDENCES

MEYDAN

*by*

**AVIAAN**

DEVELOPMENT PARTNER

 CLÉDOR



GRANDEUR SPANNING  
CONTINENTS





# ARTHOUSE HOTEL, NEW YORK CITY

Born in New York's Upper West Side, Arthouse is a boutique hotel brand rooted in character, creativity, and community. It blends historic charm with a lived-in, contemporary style—more gallery than lobby, more neighborhood hangout than hotel chain. Each Arthouse property reflects its surroundings while staying true to the original vision: spaces that feel personal, curated, and quietly full of life.







## ARTHOUSE RESIDENCES MEYDAN

From the bustling heart  
of New York to the iconic Meydan,  
Arthouse Residences rise from the  
fabric of dreams, where the future of  
luxury is woven.

Originally a boutique hotel in NYC,  
now a refined address in Dubai.



# A NEW CHAPTER

Arthouse first brought its curated living philosophy to the UAE with Arthouse Al Marjan, an ode to tranquility, design, and shoreline elegance in Ras Al Khaimah.

Now, the brand moves inward to the cultural heartbeat of Dubai: Meydan.





# THE FIRST HOTEL-BRANDED RESIDENCES IN MEYDAN

A realm of luxury, comfort,  
and connectivity.

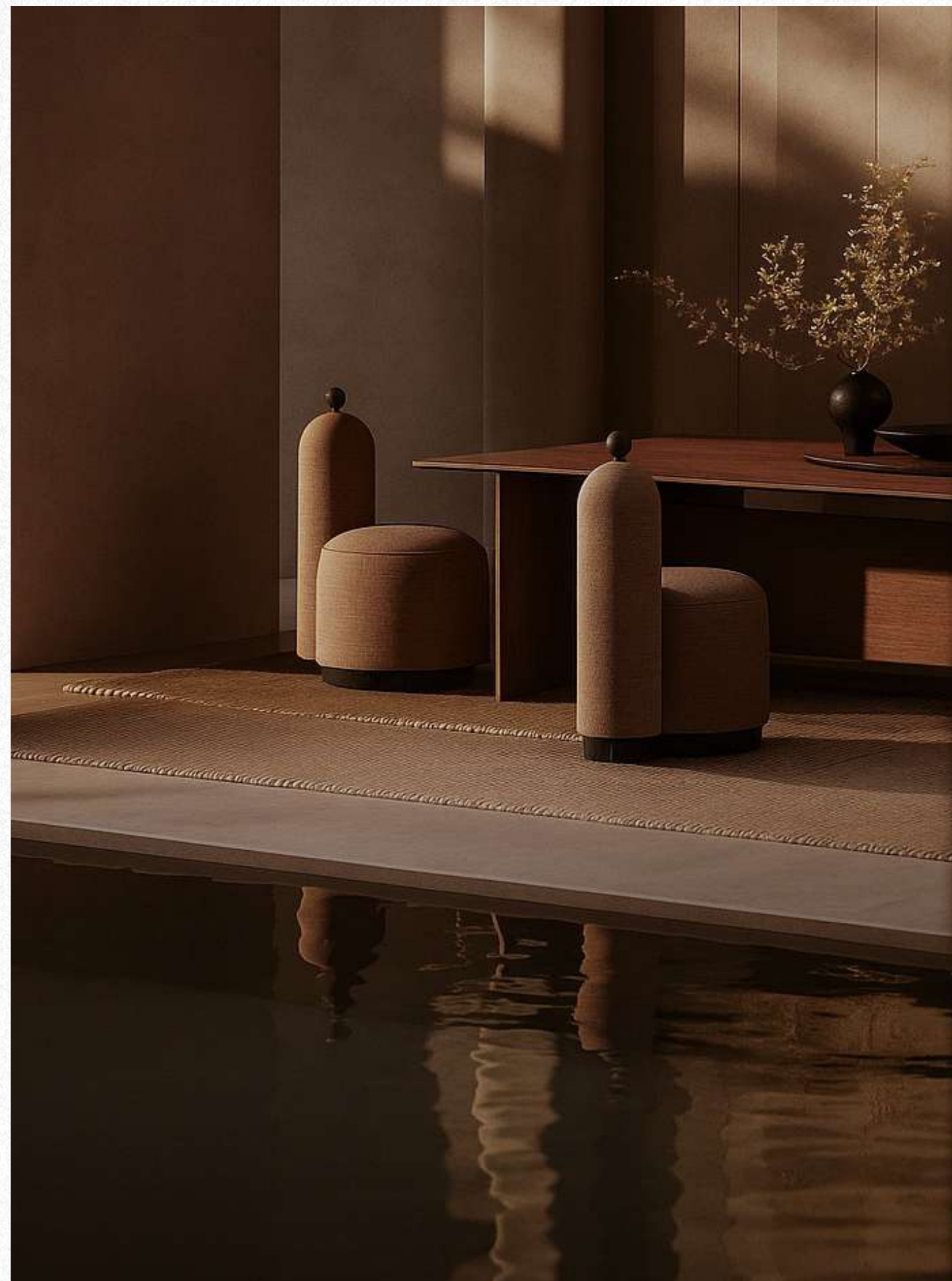






# A RARE COMPOSITION OF ART, STYLE & ARCHITECTURE

An exclusive sanctuary of  
just 92 premium residences.





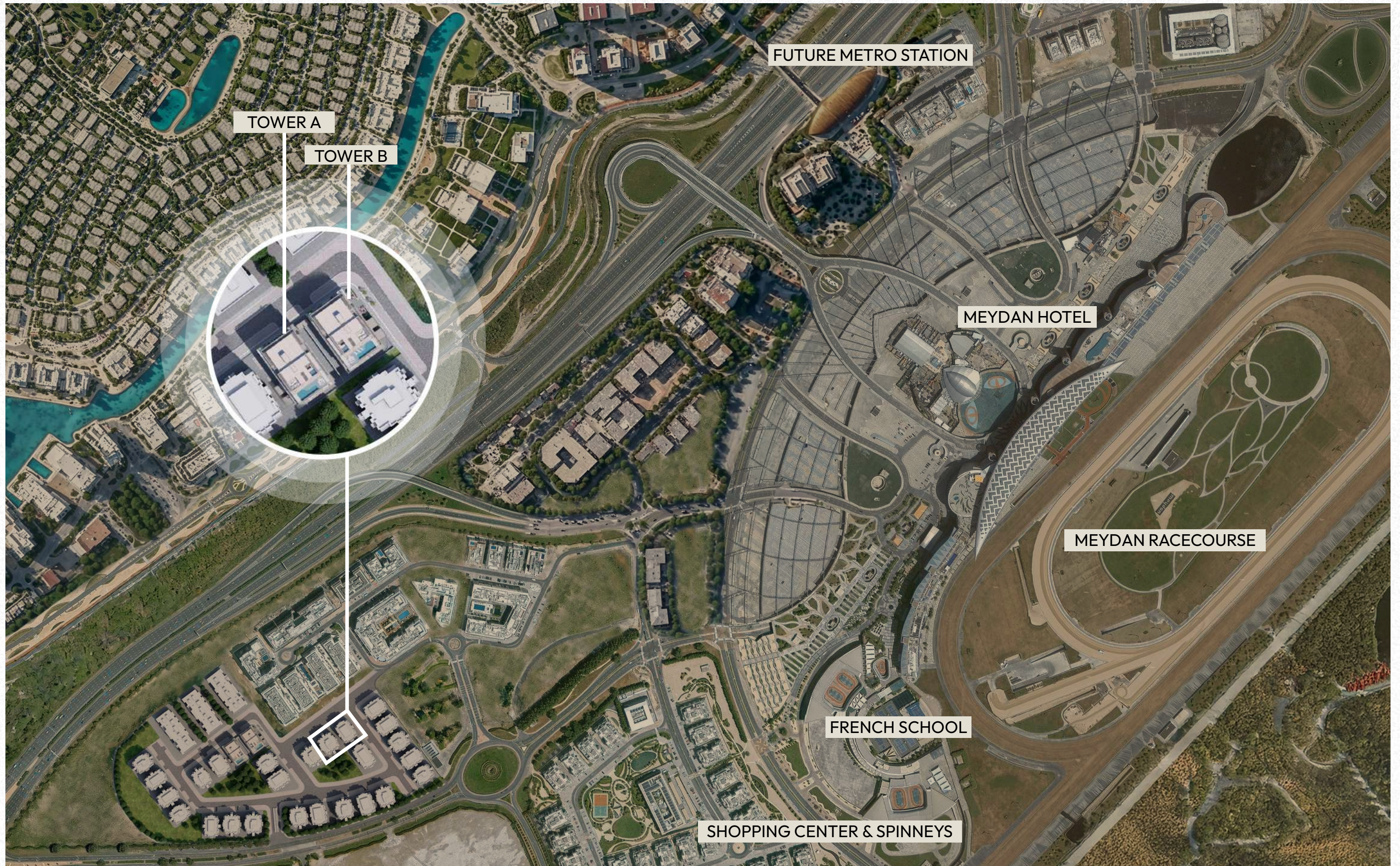
# MEYDAN...

## A METROPOLIS OF ITS OWN

- 1 Burj Khalifa and Downtown Dubai — 10 Minutes
- 2 Dubai International Airport — 15 Minutes
- 3 Burj Al Arab — 15 Minutes
- 4 Mall of the Emirates — 15 Minutes
- 5 Palm Jumeirah — 20 Minutes
- 6 Al Maktoum Airport — 25 Minutes

ARTHOUSE RESIDENCES





TOWER A

TOWER B

FUTURE METRO STATION

MEYDAN HOTEL

MEYDAN RACECOURSE

FRENCH SCHOOL

SHOPPING CENTER & SPINNEYS

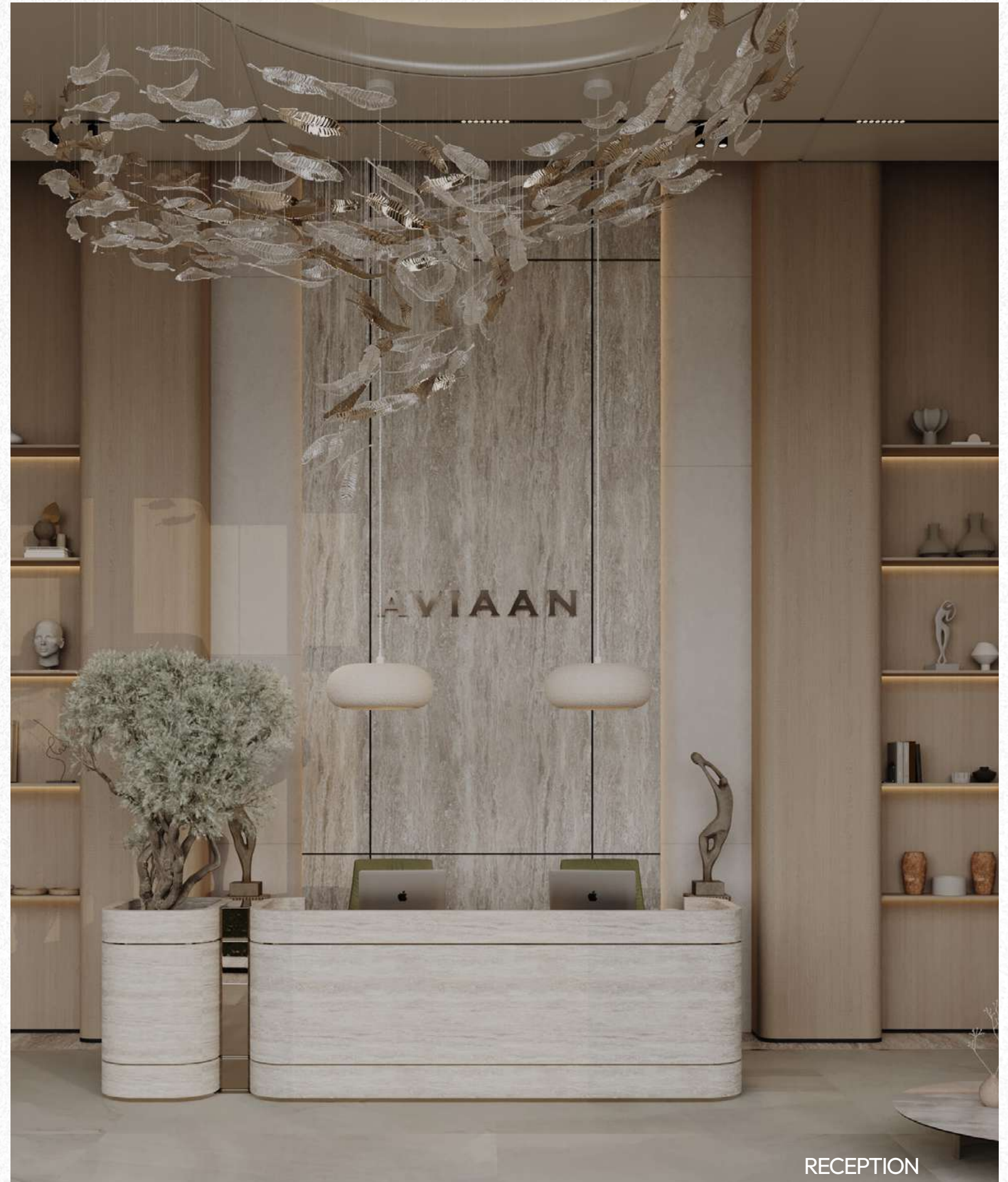








WHERE THE  
CANVAS BEGINS



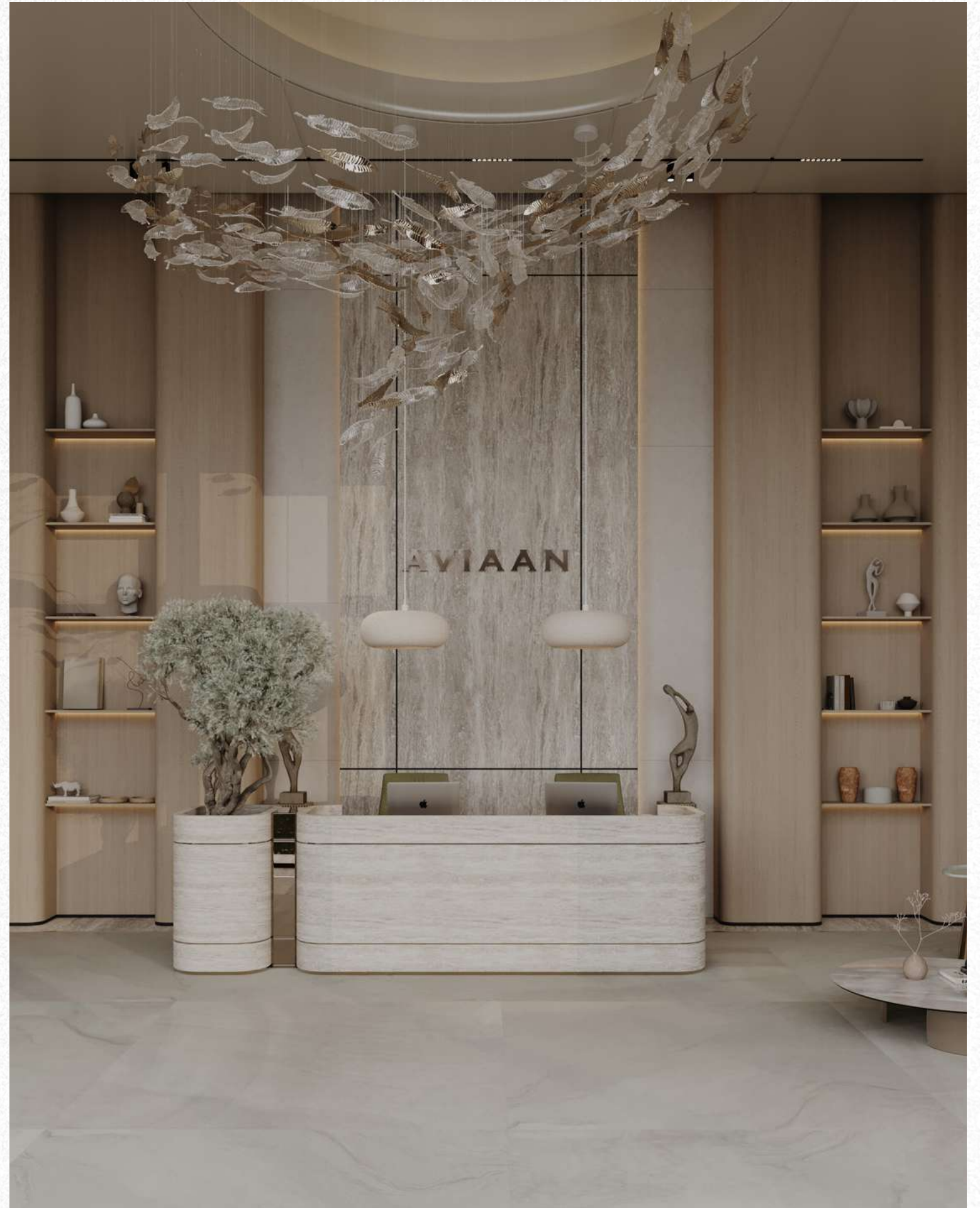
RECEPTION





INTERIORS  
THAT EMBRACE THE ART  
OF LESS IS MORE















# A MOSAIC OF STYLE

DESIGNED TO INSPIRE  
YOU EVERY MOMENT.





# ONE BEDROOM RESIDENCES

WITH STUDY\*





KITCHEN & DINING





LIVING ROOM





LIVING ROOM





POWDER







BEDROOM





BATHROOM





STUDY





ENCHANTINGLY  
MODERN  
& INVITING





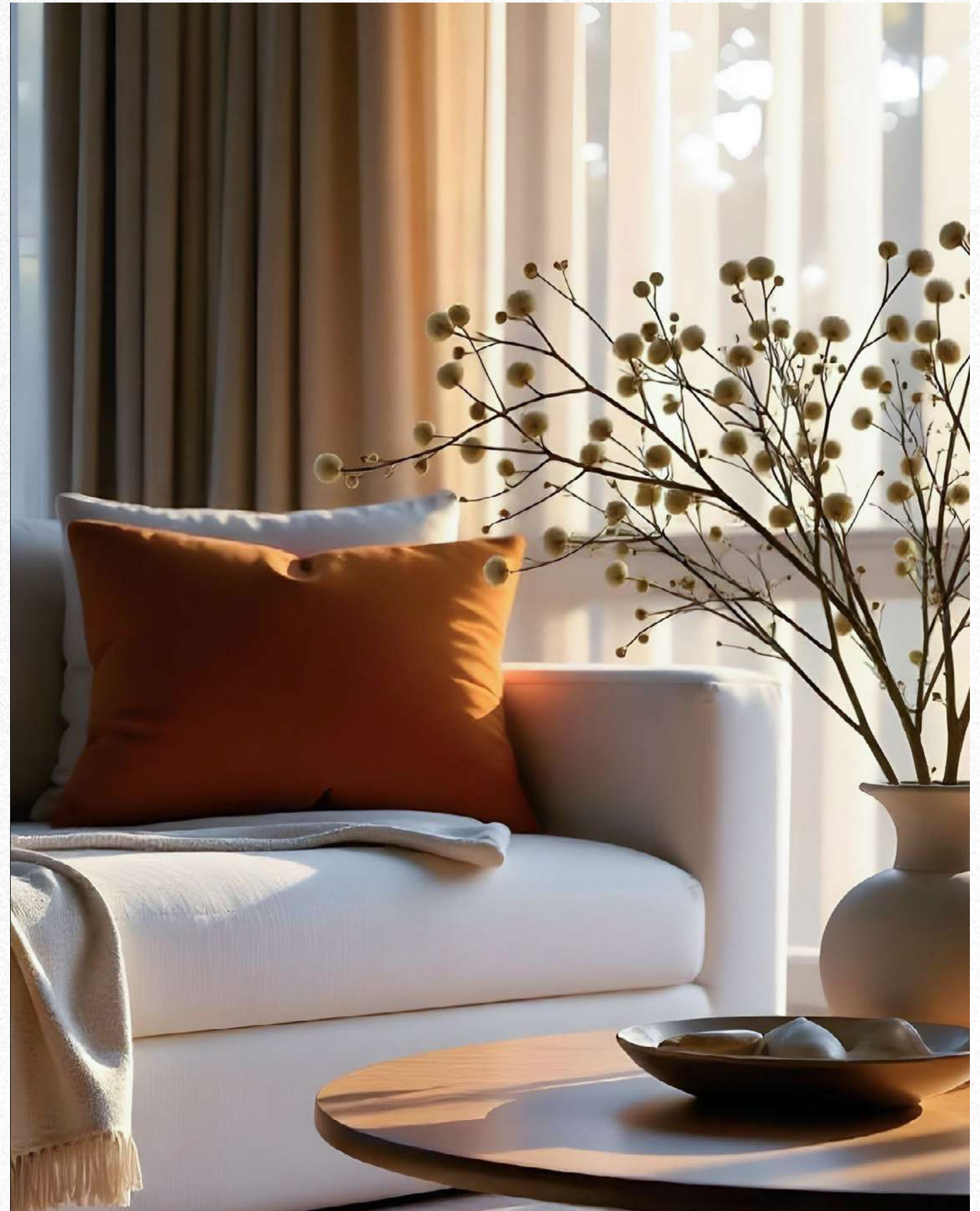
# TWO BEDROOM RESIDENCES





## OPENNESS, PRIVACY AND ABUNDANT LIGHT.

Floor-to-ceiling windows  
that invite light and air, giving  
your spirit a place to rest.







HALLWAY





KITCHEN & DINING





LIVING ROOM





POWDER ROOM







BEDROOM





CLOSET





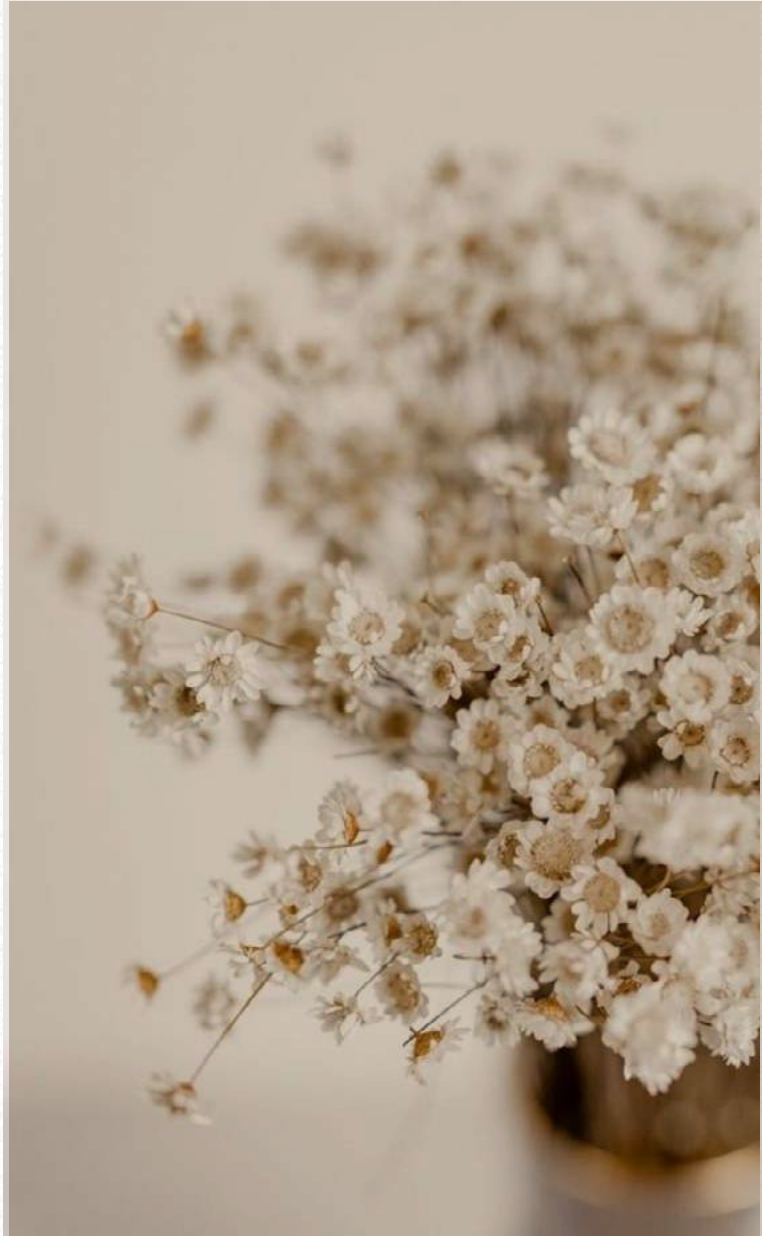
BATHROOM





BEDROOM





BATHROOM



# TWO BEDROOM PENTHOUSE





KITCHEN + DINING





KITCHEN + DINING





LIVING ROOM









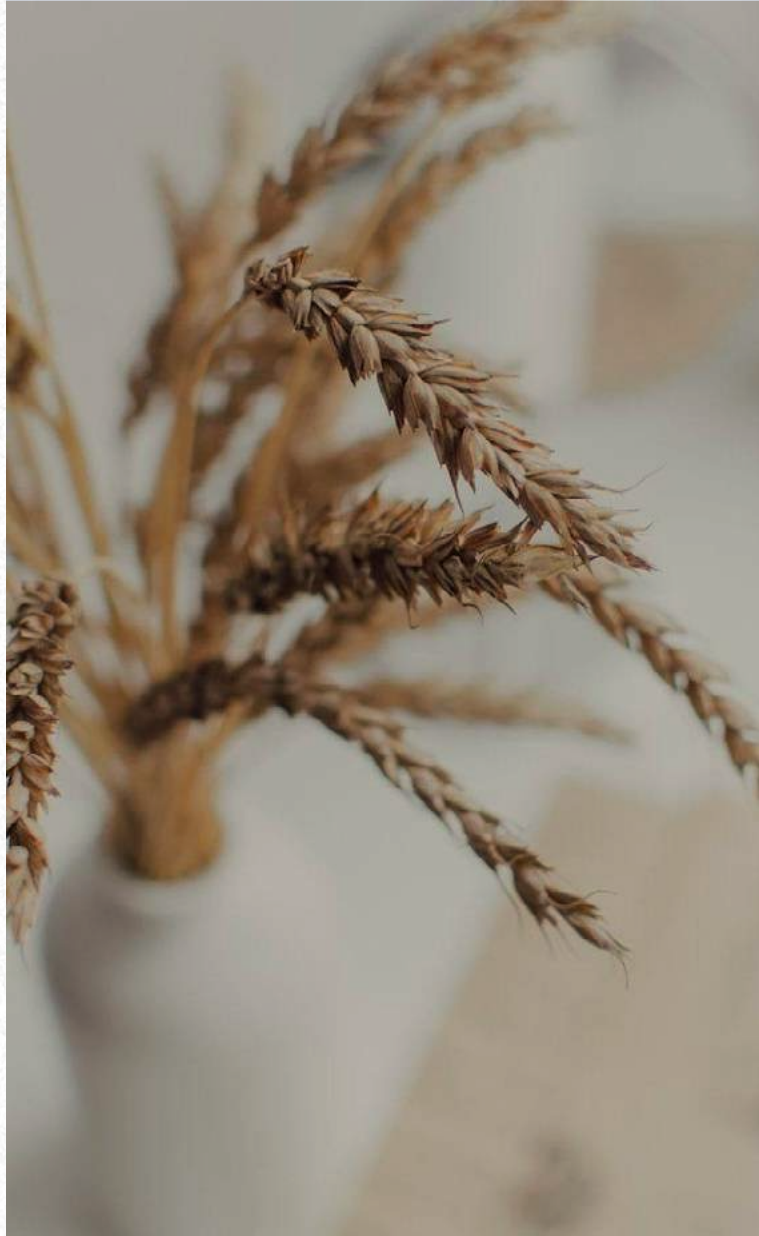
BEDROOM





CLOSET





BATHROOM





BEDROOM





BATHROOM





PRIVATE PLUNGE POOL



A GALLERY OF CURATED  
AMENITIES







INFINITY POOL





WORLD-CLASS GYM





OUTDOOR LOUNGE & POOL AREA





KIDS' PLAY AREA





RETAIL OUTLETS



## A PRIVATE COLLECTION OF BOUTIQUE RESIDENCES

### Tower A

1 BHK	28
1 BHK + STUDY	8
2 BHK	8
2 BHK PENTHOUSE	2

### Tower B

1 BHK	28
1 BHK + STUDY	8
2 BHK	8
2 BHK PENTHOUSE	2



# DESIGNED BY MODEL CONTRACTING

One of the UAE's leading  
architectural firms.



# DEVELOPER DETAILS



# AVIAAN

AVIAAN is founded by real estate veterans with over 18 years of experience shaping Dubai's growth. Their deep market knowledge and design-first mindset guide a careful, considered approach to development.



Clédor is a luxury developer redefining UAE real estate through expert-led design and high-end finishes. Focused on long-term value, Clédor has a pipeline of over AED 2.5 billion and is known for its attention to detail, innovation, and elevated living standards.

DEVELOPMENT PARTNER  
 CLÉ DOR



# ARTHOUSE RESIDENCES

MEYDAN

*by*

**AVIAAN**

DEVELOPMENT PARTNER

**CLÉ DOR**

DISCLAIMER:

Any images and visualizations contained herein are provided for illustrative and marketing purposes only. All information contained herein is subject to change without notice and without liability and only the information contained in the final Sales and Purchase Agreement entered into between the Seller and Buyer will have any legal effect. E&OE